
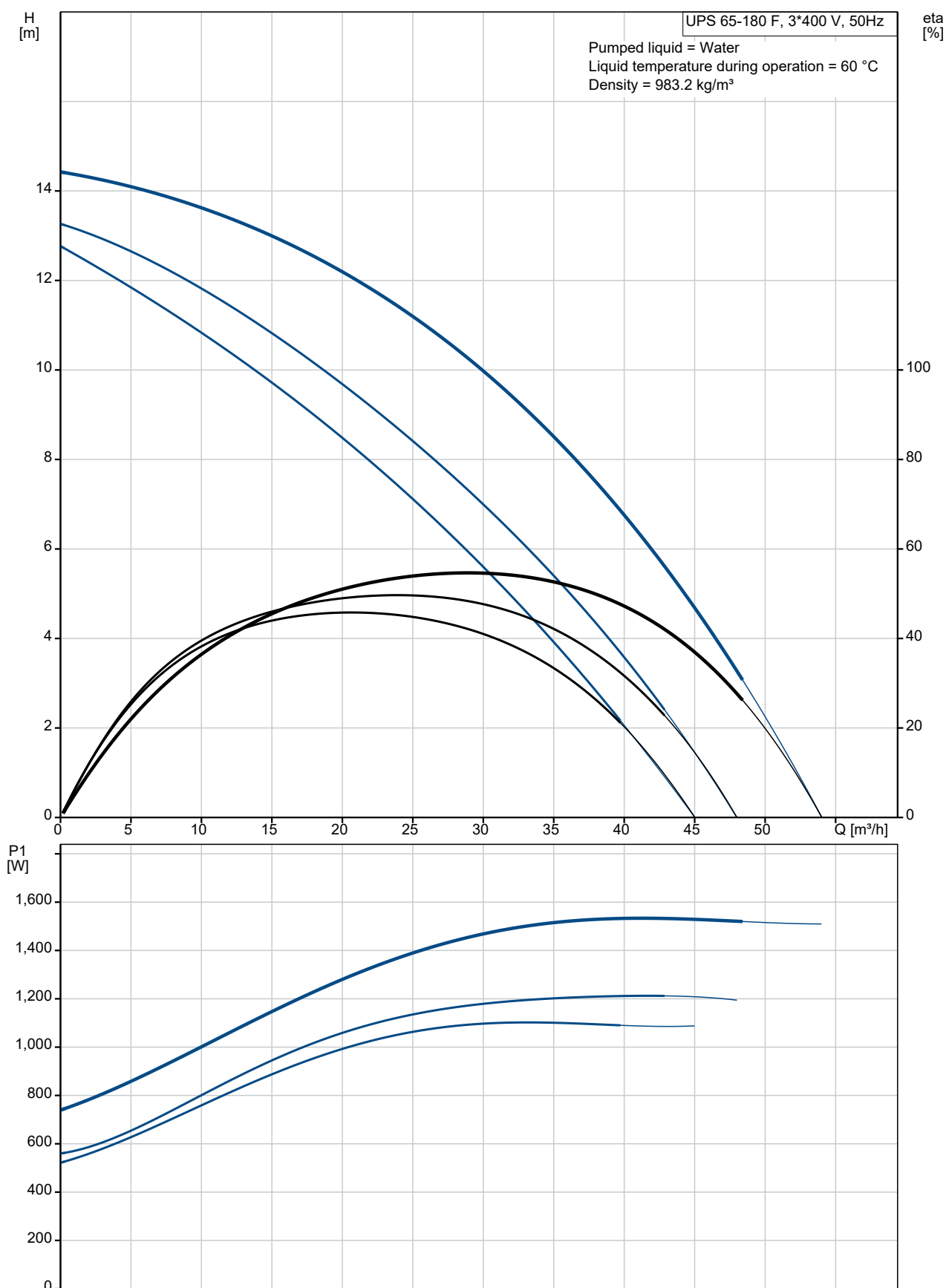


Qty.	Description
1	<p>UPS 65-180 F</p>  <p>Note! Product picture may differ from actual product</p> <p>Product No.: 96402316</p> <p>The pump is of the canned rotor type, i.e. pump and motor form an integral unit without shaft seal and with only two gaskets for sealing. The bearings are lubricated by the pumped liquid.</p> <p>In order to avoid problems in connection with disposal, great importance has been attached to using as few different materials as possible. The pump is characterized by:</p> <p>Speed no: * 3 speed motor.</p> <ul style="list-style-type: none"> * Ceramic radial bearings. * Carbon axial bearing. * Stainless steel rotor can, bearing plate and rotor cladding. * Aluminium alloy stator housing. <p>Pump housing: * Cast iron pump housing.</p> <ul style="list-style-type: none"> * Stator with built-in thermal switch. <p>Phase: The motor is a 3-phase motor.</p> <p>The pump is supplied with a standard module in the terminal box. The standard module is to be connected to the mains supply via external contactor.</p> <p>Controls:</p> <p>Relay: without relay</p> <p>Liquid:</p> <p>Pumped liquid: Water</p> <p>Liquid temperature range: -10 .. 120 °C</p> <p>Selected liquid temperature: 60 °C</p> <p>Density: 983.2 kg/m³</p> <p>Technical:</p> <p>Approvals on nameplate: AAA,EAC</p> <p>Materials:</p> <p>Pump housing: Cast iron EN-JL1040 ASTM 35 B - 40 B</p> <p>Impeller: Stainless steel DIN W.-Nr. 1.4301 AISI 304</p> <p>Installation:</p> <p>Range of ambient temperature: 0 .. 40 °C</p>

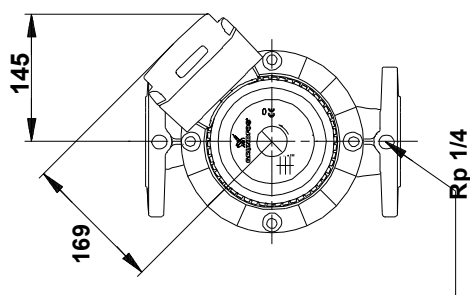
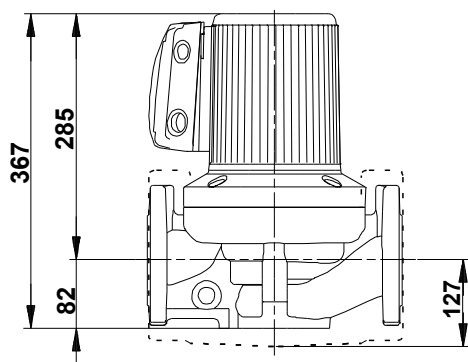
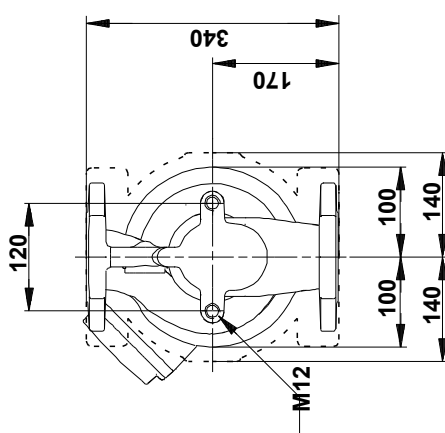
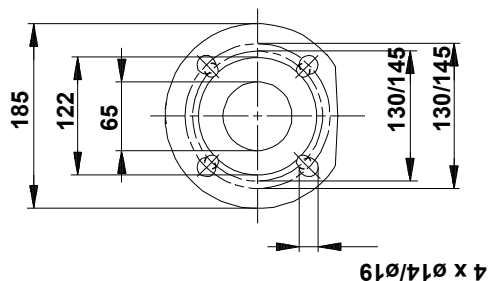
Qty.	Description
	<p>Maximum operating pressure: 10 bar</p> <p>Flange standard: DIN</p> <p>Pipe connection: DN 65</p> <p>Pressure rating: PN 6 / PN 10</p> <p>Port-to-port length: 340 mm</p> <p>Electrical data:</p> <p>Power input in speed 1: 1100 W</p> <p>Power input in speed 2: 1200 W</p> <p>Max. power input: 1550 W</p> <p>Mains frequency: 50 Hz</p> <p>Rated voltage: 3 x 400-415 V</p> <p>Current in speed 1: 1.85 A</p> <p>Current in speed 2: 2 A</p> <p>Current in speed 3: 2.9 A</p> <p>Cos phi in speed 1: 0.86</p> <p>Cos phi in speed 2: 0.87</p> <p>Cos phi: 0.77</p> <p>Insulation class (IEC 85): H</p> <p>Enclosure class (IEC 60529): X4D</p> <p>Others:</p> <p>Net weight: 32.7 kg</p> <p>Gross weight: 33.1 kg</p> <p>Shipping volume: 0.043 m³</p> <p>Danish VVS No.: 380737043</p> <p>Norwegian NRF no.: 9042408</p>



96402316 UPS 65-180 F 50 Hz

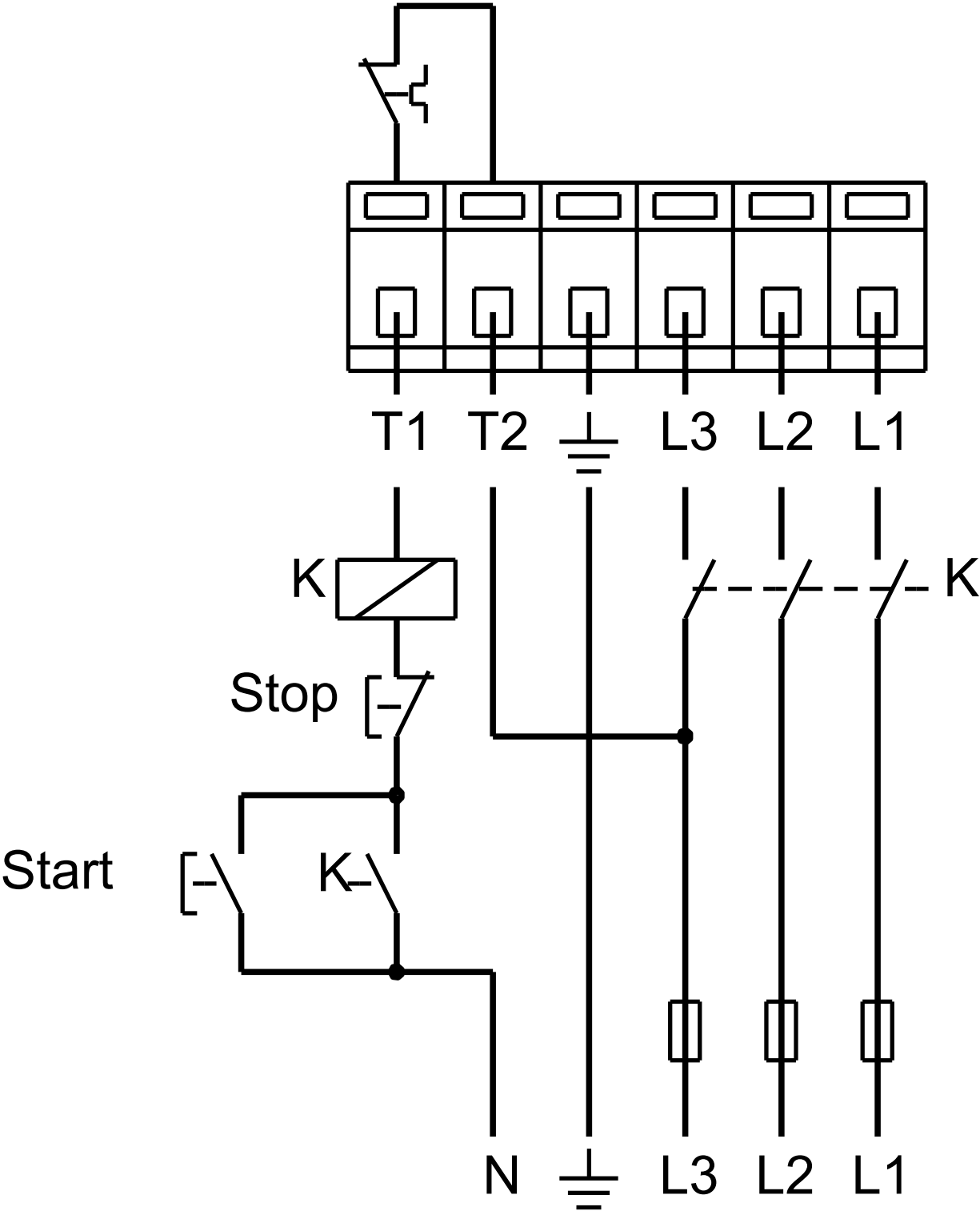


96402316 UPS 65-180 F 50 Hz



Note! All units are in [mm] unless others are stated.
Disclaimer: This simplified dimensional drawing does not show all details.

96402316 UPS 65-180 F 50 Hz



Note! All units are in [mm] unless others are stated.